

Assembly instructions

Power supply unit for ID Display seca 496

Power supply unit for scales

seca 651/650, seca 655/654, seca 555/554/552

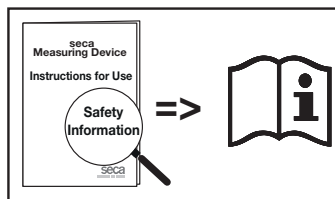
Deutsch: Anders als in der Gebrauchsanweisung angegeben!

English: Other than stated in the currently published Instructions for Use!

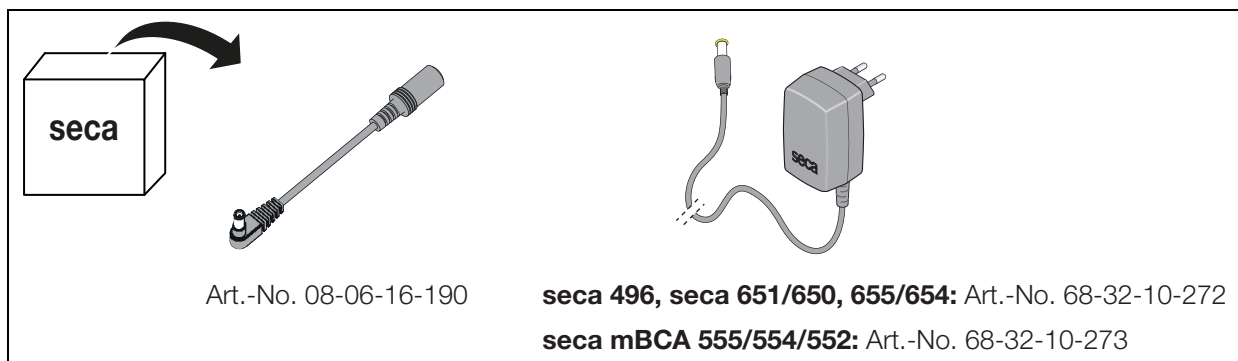
Français : Contrairement aux informations présentes dans le mode d'emploi !

Español: ¡A diferencia de lo que se indica en el manual de instrucciones!

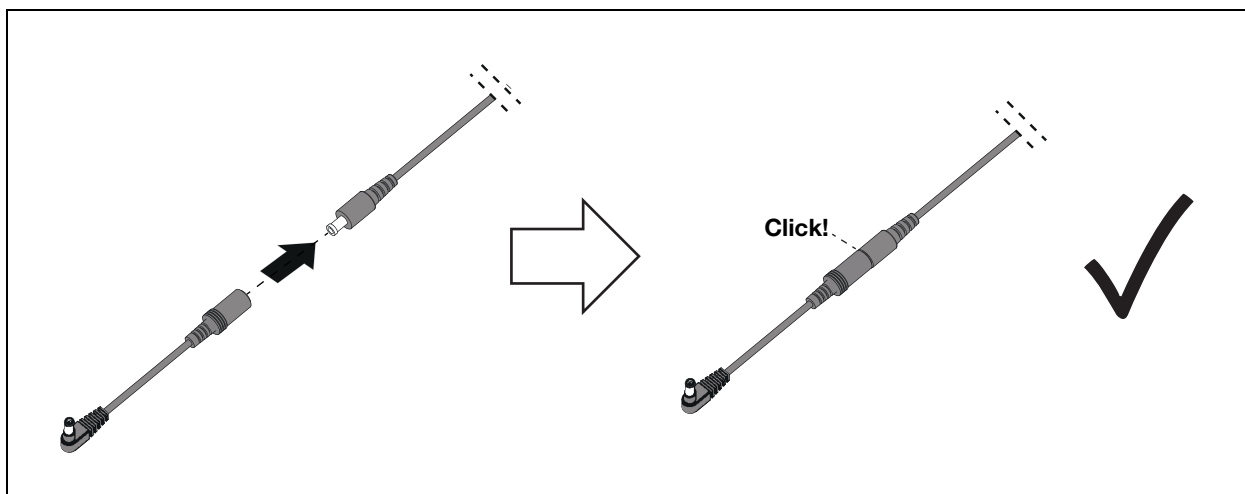
1. SICHERHEITSHINWEISE • SAFETY PRECAUTIONS • CONSIGNES DE SÉCURITÉ • INDICACIONES DE SEGURIDAD



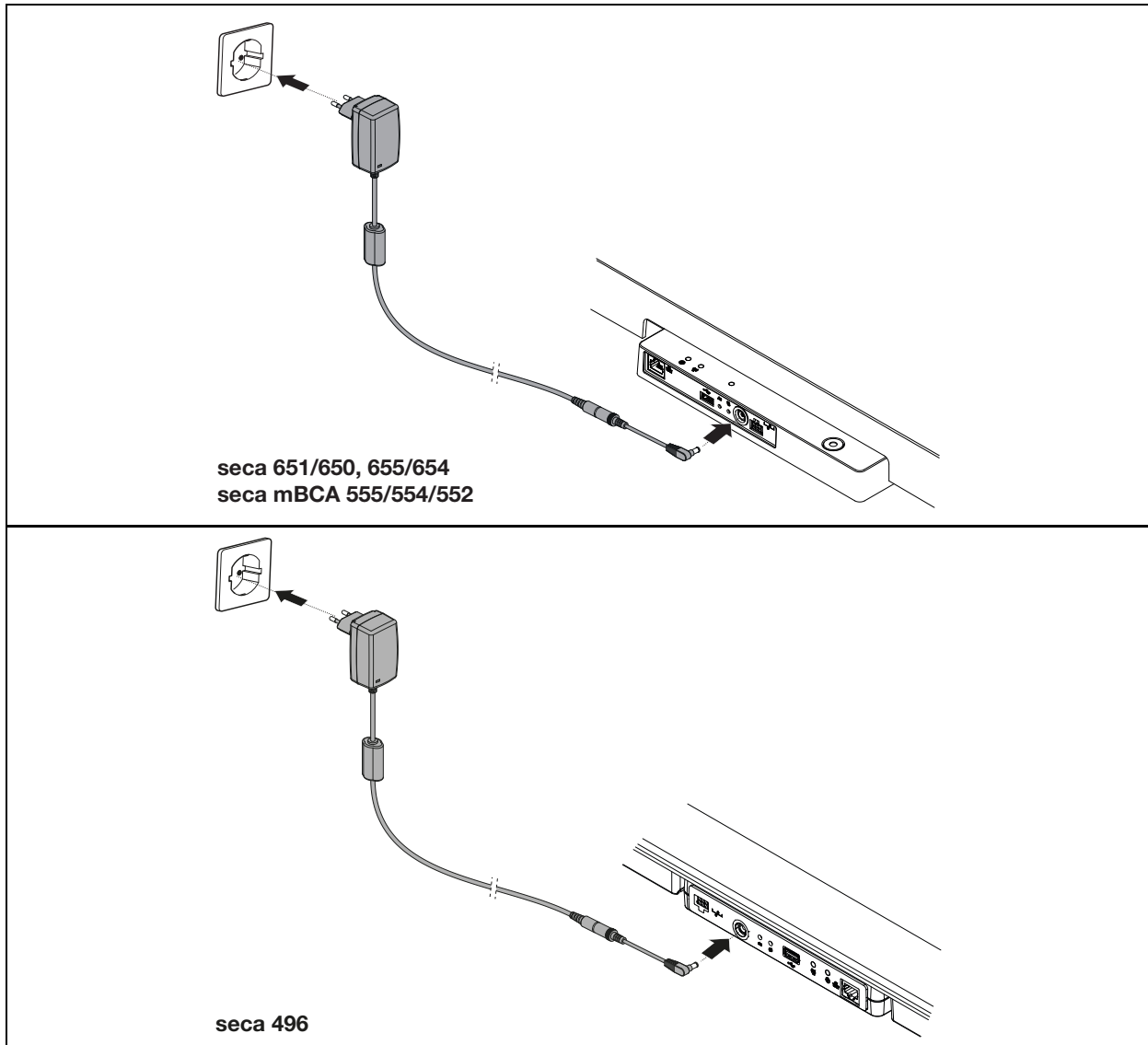
2. LIEFERUMFANG • SCOPE OF SUPPLY • ÉLÉMENTS LIVRÉS • VOLUMENT DE SUMINISTRO



3. MONTAGE • ASSEMBLY • ASSEMBLAGE • MONTAJE



4. STROMVERSORGUNG HERSTELLEN • ESTABLISHING POWER SUPPLY • ÉTABLIR L'ALIMENTATION ÉLECTRIQUE • ESTABLECER LA ALIMENTACIÓN ELÉCTRICA



Medical Measuring
Systems and Scales
since 1840

17-10-07-674-100_2024-04S

seca gmbh & co. kg
Hammer Steindamm 3-25
22089 Hamburg
Germany

T +49 40 20 00 00 0
F +49 40 20 00 00 50
E info@seca.com

seca operates worldwide
with headquarters in
Germany and branches in:
seca france
seca united kingdom
seca north america
seca schweiz
seca zhong guo

seca nihon
seca mexico
seca austria
seca polska
seca middle east
seca suomi
seca américa latina
seca asia pacific

seca danmark
seca benelux
seca lietuva
and with exclusive
partners in more than
110 countries.

All contact data at seca.com